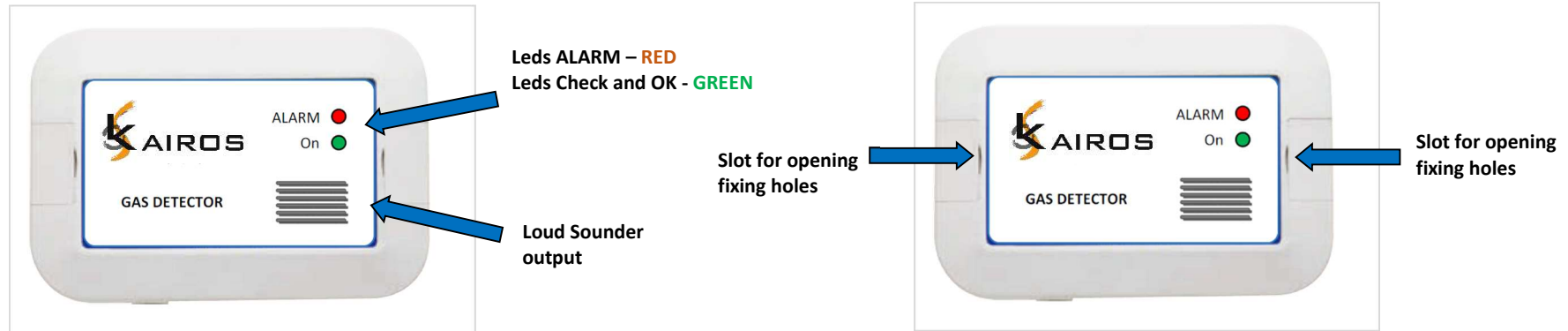




**AIRGUARD**  
GAS DETECTOR



## AirGuard User Interface



## AirGuard Technical features



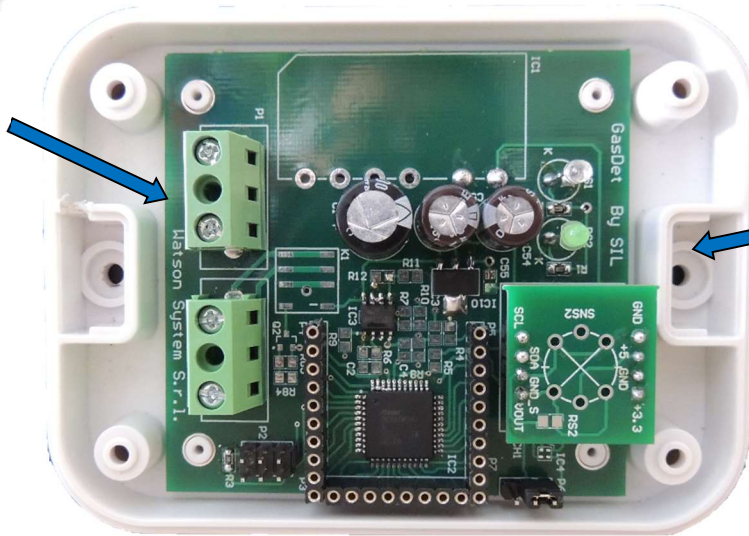
Power Supply	
Power Supply Voltage Range	100 .. 240 Vac
Internal power supply	5/3.3 Vdc
Current Consumption	150 mA @ 5Vdc
Enviromental	
Operative Temperature	-10 .... +40 °C
Operative Humidity	30% ÷ 90% without condensation
Operative Pressure	1013 ± 10% hPa
Measurements	
Measure substance	Carbon Monoxide, Methane
Measure Range	10 ... 500ppm (CO) 300 ... 10000ppm CH4
Type of sensor	Electronic semiconductor sensor
Compensation	Efficiency Temperature and Humidity Compensation

Output and User Interface	
Buzzer	Internally 75 dB
Led Green ON	Normal Operative Function
Led Green Flashing	Flashing if there is an anomaly or malfunction detected by self-diagnosis
Led Red ON	Gas concentration above the set threshold
Enclosures	
Material type	External structure in thermoplastic material
Dimensions	100 mm x 75 mm x 22 mm
Weight	0.1 Kg
IP protection	IP42 (EN60529)
Option Features	
Bluetooth optional	Bluetooth communications for setup and view dynamic data
Wireless connection	Communication Wifi (Notification) and App remote control in development

## AirGuard Installation



POWER SUPPLY  
CONNECTOR 220 Vac



Holes for  
mounting wall

## AirGuard Options



AIRGUARD CAN BE PROVIDE WITH BLUETOOTH COMMUNICATIONS  
FOR SETUP AND DYNAMIC DATA



COMMUNICATION WIFI (NOTIFICATION) AND APP REMOTE CONTROL  
COMING SOON





**COST EFFICIENCY**

It has an excellent quality/ price ratio



**EASY INSTALLATION**

Few Minutes and you install it.



**EASY TEST**

Clearly visible the status with indications LEDs



**SAFETY and REALIBILITY**

No parts need to change, No replaceable battery.

**Kairos S.r.l.** gas detectors efficiently meet the need for home security against gas leaks.

**AirGuard** efficiently, simply and economically satisfies your need.

**AirGuard** has good sensitivity to carbon monoxide and methane in wide range, and has advantages such as long lifespan and low cost. It is appropriated for light gases (methane, city gas etc.) to be installed a short distance from the ceiling

In the event that the gas concentration exceeds the set thresholds, the device emits an acoustic signal and at the same time a red alarm signal lights up.

After an alarm, the red signal LED will go off only when the room air has returned to the optimal condition of clean air.

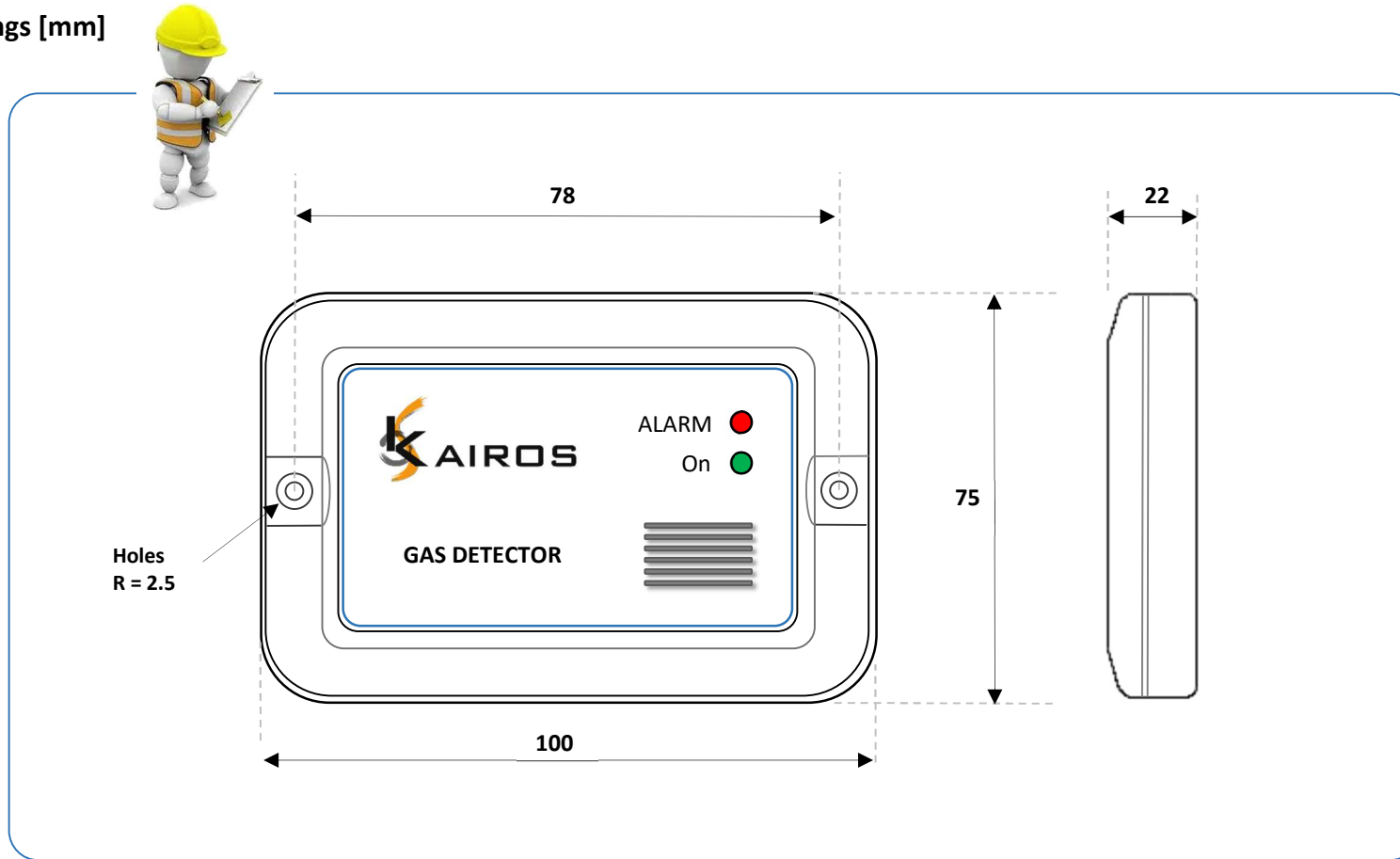
In addition, in **AirGuard** there is also a terminal block for connection to a solenoid valve which, in the event of an alarm, blocks the flow of gas entering the room

**AirGuard Standard**

*	----	*	----
*	CONFORMITA' CE	*	---
*	--	*	
*		*	



## AirGuard Drawings [mm]



## AirGuard Product Market and ordering information

ORDERING INFORMATION			
Product Description	Serie Name	Order Code	MOQ
AirGuard Line CO	AirGuard	---	100

